



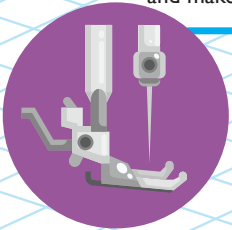
MACHINE SEWABLE

LED STRIPS INSTRUCTIONS



FOOT TYPE

It's recommended to use a slimline foot like the zipper foot to make sure you can avoid the foot running over the bumpy LEDs. This will put less strain on the LEDs and make it easy to get nice straight rows.

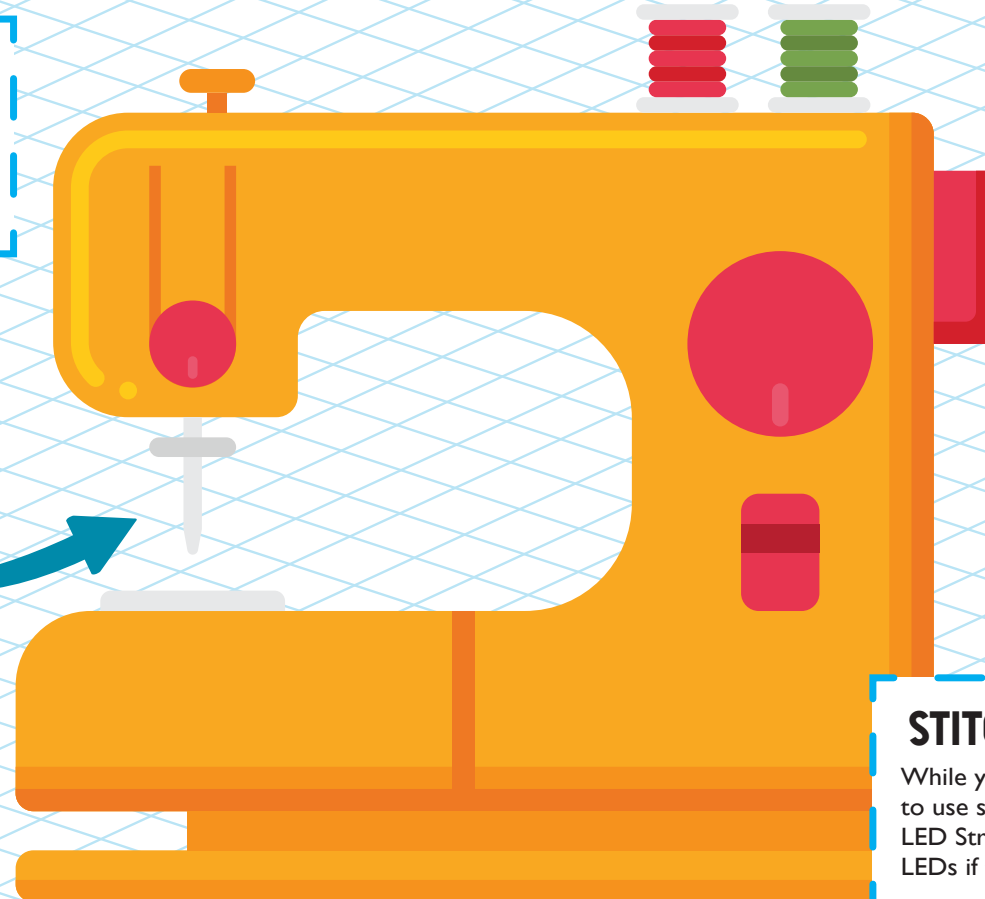


NEEDLE MAINTENANCE

After prolonged sewing with conductive tape, the needle can get a little gummed up with adhesive. Keep it clean with alcohol wipes or something similar to keep on sewing. Turn the machine off and remove the needle to clean safely.

SUCCESSFUL STITCHING

Make sure to select the right needle for your project. Always sew a test of conductive tape on your fabric first to ensure the needle is right for the thread and fabric used.



MACHINE SEWING



Run your LED strips through the sewing machine to finalise your design. Make sure to only sew the gold pad areas and not beyond it where the LEDs lay. Do not sew into the battery holder, there is a small hole in the battery pads for you to hand stitch this down into place. Standard non-conductive thread is fine for this. You can also use double sided tape to help secure your battery holder and LED strips in place.

STITCH TYPES



While you can use any stitch type, it's recommended to use straight stitch with the length set at 3 with LED Strips. This makes it easier to unpick and reuse LEDs if the need arises.

Any questions or feedback?
steph@piper3dp.com

